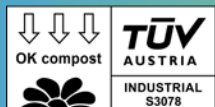




www.atlanticpkg.com

**Sustainable. Strong. Reliable.** A high-performance foam built to protect impact-sensitive, cold-chain goods, and more—without the waste.



TUV AUSTRIA OK compost  
INDUSTRIAL certified



lomi™  
approved



new earth  
approved

## ABOUT

Cruz Foam is the first compostable packaging foam, that matches the performance and characteristics of synthetic foams, ensuring the safe delivery of temperature-sensitive products, household goods, electronics, appliances, and more all while meeting industry leaders' sustainability demands.

## SUSTAINABILITY

- Made with upcycled food waste
- ASTM D6400 & D5338 approved
- TUV AUSTRIA OK compost INDUSTRIAL certified
- Breaks down into nutrient-rich soil after use
- Fully disintegrates in 8 weeks with no residue
- Supports healthy seed germination (Ecotox tested)

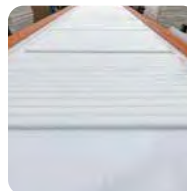
## DETAILS

- Designed to replace EPE (1.2-1.7 lb/ft<sup>3</sup>) and EPS (<3 lb/ft<sup>3</sup>)
- Supplied in sheet format for final application conversion
- Provides exceptional cushioning for product protection
- Offers strong thermal insulation capabilities
- Delivers effective vibration dampening
- A superior alternative to traditional synthetic foams



## SHEET DIMENSIONS

Size:	Thickness:	Density:
48" x 40"	Nominal 1"	2 lb/ft <sup>3</sup>
48" x 96"	(-0/+0.25")	3 lb/ft <sup>3</sup>
48" x 108"	Nominal 1.5"	(-0/+0.25")



Cruz Foam comes off the line as a sheet



Sold by the pallet to converters

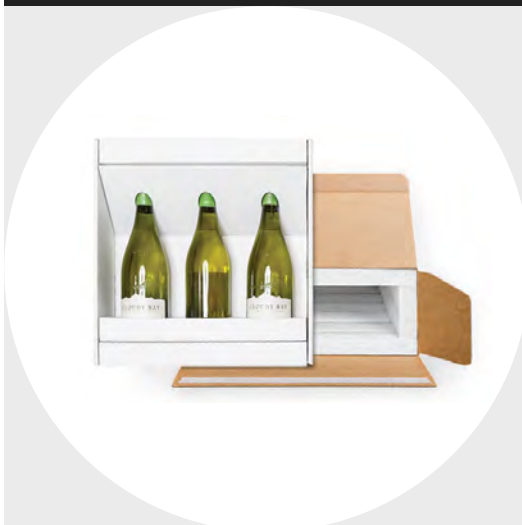


Converted into various packaging applications

### cold-chain



### wine & spirits



### block & brace



# CRUZ FOAM

# TECHNICAL DATA SHEET

## PROPERTIES OF 2 LB/FT<sup>3</sup> CRUZ FOAM

PROPERTIES	TEST METHOD*	VALUE
Color	—	Natural White
Density	ASTM3575W	2 lb/ft <sup>3</sup> (32 kg/m <sup>3</sup> )
Compressive Strength (@10%)	ASTM3575D	0.86 psi (5.9 kPa)
Compressive Strength (@25%)	ASTM3575D	1.98 psi (24.3 kPa)
Compressive Strength (@50%)	ASTM3575D	3.53 psi (24.3 kPa)
24 Hr Compression Set	ASTM D3575 Suffix B	33%
Compressive Creep	ASTM D3575, Suffix BB (168 hrs @ 2 psi/13.8 kPa)	26%
R-Value Per Inch	ASTM-C518	3.6°F • ft <sup>2</sup> • h/BTU
RSI Per 25mm	ASTM-C518	0.63 K • m <sup>2</sup> /W

## PROPERTIES OF 3 LB/FT<sup>3</sup> CRUZ FOAM

PROPERTIES	TEST METHOD*	VALUE
Color	—	Natural White
Density	ASTM3575W	3 lb/ft <sup>3</sup> (48 kg/m <sup>3</sup> )
Compressive Strength (@10%)	ASTM3575D	1.19 psi (8.2 kPa)
Compressive Strength (@25%)	ASTM3575D	2.77 psi (19.1 kPa)
Compressive Strength (@50%)	ASTM3575D	4.97 psi (34.3 kPa)
24 Hr Compression Set	ASTM D3575 Suffix B	30%
Compressive Creep	ASTM D3575, Suffix BB (168 hrs @ 2 psi/13.8 kPa)	19%
R-Value Per Inch	ASTM-C518	3.6°F • ft <sup>2</sup> • h/BTU
RSI Per 25mm	ASTM-C518	0.63 K • m <sup>2</sup> /W

\*Testing protocol based on ASTM tests; results are not ASTM certified



A NEW EARTH  
PROJECT

