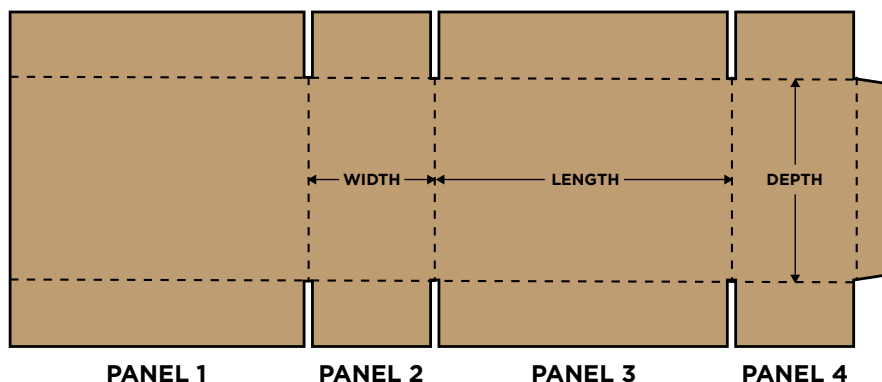


HOW TO MEASURE A CORRUGATED BOX



www.atlanticpkg.com

- Carefully remove the tape, stitches, or separate the glue flap. Lay the box flat with the inside liner facing up. The unjoined box should look like the illustration to the right.
- The box measurements should be taken on panels 2 and 3.
- Take a pen and mark the exact center of the scores and measure the distance between marks to the nearest sixteenth of an inch.
- This is **NOT** the inside dimension of the box. Subtract from this the "Score Allowances" as follows:



RSC SCORE ALLOWANCES (C FLUTE)	
DIMENSION	SUBTRACT
Length	3/16
Width	3/16
Depth	3/8

ALLOWANCES FOR RSC BOXES			
FLUTE	LENGTH	WIDTH	DEPTH
E	1/16"	1/16"	1/8"
B	1/8"	1/8"	1/4"
C	3/16"	3/16"	3/8"
EB	3/16"	3/16"	3/8"
BC	1/4"	1/4"	1/2"
AC	3/8"	3/8"	3/4"
TW	1/2"	1/2"	1"

- To the right is an example of an RSC container 12 x 5 x 8 measured center of score to center of score.

